



SUBJECT: CONTACT-COATING CONTINUITY  
 CHECK PROCEDURE

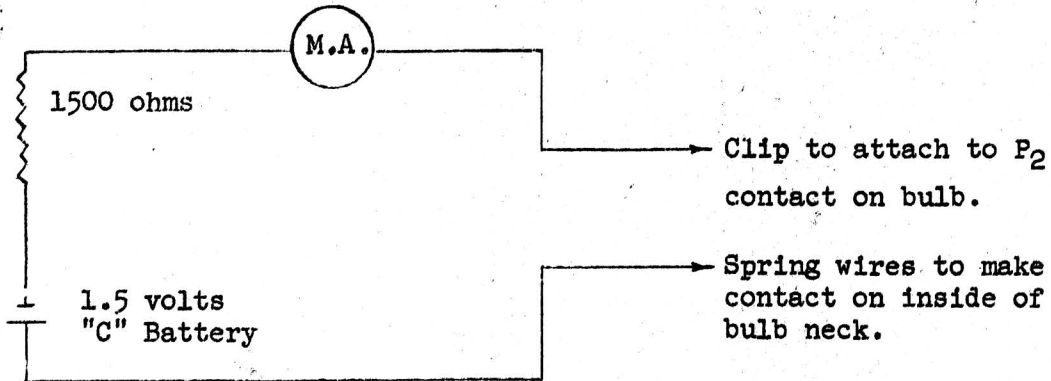
SUPERSEDED DATE May 16, 1947

SCHEDULE NO. 1

MAY 1955

1. PROCEDURE

Resistance between coating in tube neck and external P2 contact not to exceed 2250 ohms. Check to be made after bakeout of coating, and after speed nut insertion on types concerned, using circuit shown below.



The milliammeter should read one milliampere at full deflection. Any bulb giving a reading of 0.4 milliampere or higher when the clip is attached to the P2 Contact and the spring wire is in contact with the bulb coating in the neck, is satisfactory. Any reading lower than 0.4 indicates poor contact or open circuit.

2. INSPECTION

Bulb preparation to check continuity between coating and anode contact button on 100% of bulb assemblies.

\*\*\*

\*\*\* Schedule No. 2 Deleted.

STANDARDIZING SECTION  
 ENGINEERING DEPT.

SCALE—

DIMENSIONS IN

UNLESS OTHERWISE SHOWN.

DIMENSIONS SHOWN WITHOUT TOLERANCES ARE DESIGN CENTERS

1-529-16-61

PCL18749-126JK

\* CHANGE  
 \*\* ADDITION  
 \*\*\* DELETION

These drawings and specifications are the property of Radio Corp. of America, RCA Victor Div. and shall not be reproduced or copied or used as the basis for the manufacture or sale of apparatus and/or devices without permission.

13D26



RADIO CORPORATION OF AMERICA  
 RCA VICTOR DIV., TUBE DEPT. 2t-X11  
 STANDARDIZING, LANCASTER, PA.  
 CONTACT-COATING CONTINUITY  
 CHECK PROCEDURE  
 Process Specification

DATE Aug. 27, 1954 PAGE 3

STANDARDIZING  
 NOTICE

34-17-66

SUPERSEDES

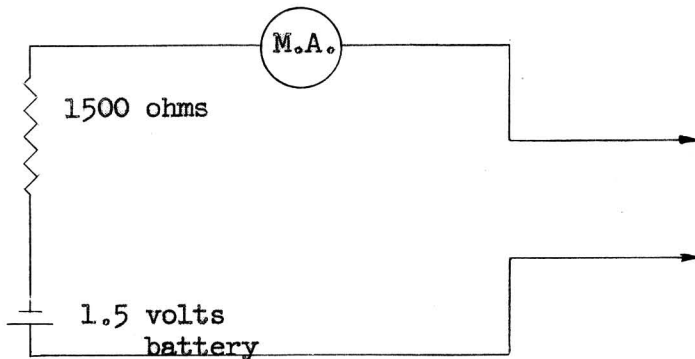
SCHEDULE NO. 3

(Initially for C73685 Tube Type)

MAY 1955

1. PROCEDURE

1. Check to be made using circuit shown below.



2. The milliammeter should read one milliampere at full deflection.  
 Any bulb giving a reading of 0.4 milliampere or higher is satisfactory.  
 Any reading lower than 0.4 indicates poor contact or open circuit.

SCALE—

DIMENSIONS IN

End of Schedule No. 3

UNLESS OTHERWISE SHOWN. DIMENSIONS SHOWN WITHOUT TOLERANCES ARE DESIGN CENTERS

14-548-12-66

PCL25191-126110EB

\* CHANGE  
 \*\* ADDITION  
 \*\*\* DELETION

These drawings and specifications are the property of Radio Corp. of America, RCA Victor Div. and shall not be reproduced or copied or used as the basis for the manufacture or sale of apparatus and/or devices without permission.

13D26—R1